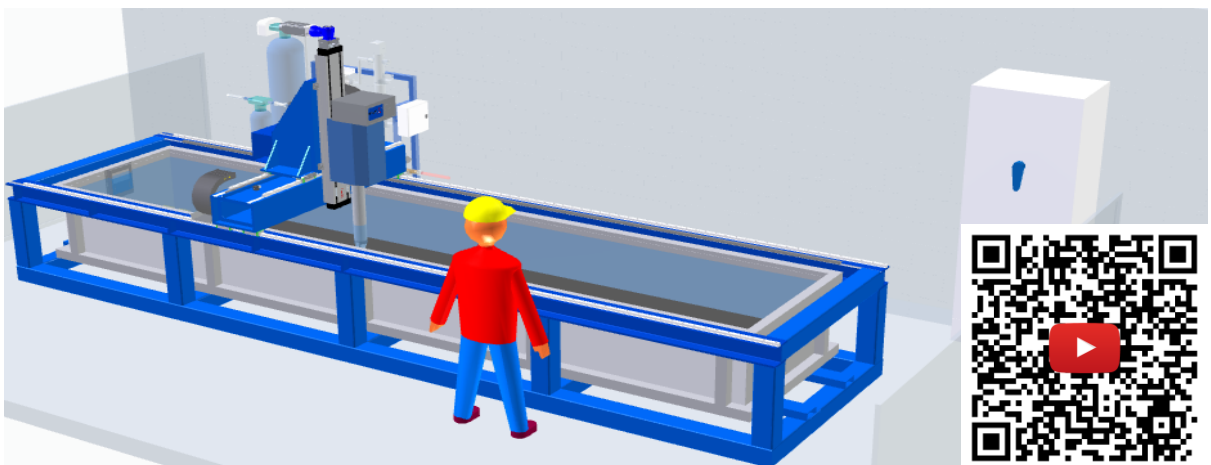




## Non-destructive testing (NDT)

### By ultrasound

- Providing turnkey automatic machines of **non-destructive ultrasonic testing in immersion** for various materials (metal, carbon, composite, etc).
- **Technology :**
  - **Multi-element transducers, 3 axis/5 axis scan.**
  - **Surface-Adapting Ultrasound (SAUL) ; Coherent Adaptive Focusing (CAF).**
  - **Automatic gripping of parts by poly-articulated robot.**
  - **Automatic parts identification.**
  - [YOUTUBE LINK](#)



## Machine NDT 6000 3A

By ultrasound

- Providing turnkey automatic machines of **non-destructive ultrasonic testing in immersion** for various materials (metal, carbon, composite, etc).
- **Technology :**
  - **Ultrasound tool: Phased array channels 16:64PR + 4 single-element channels, 3 axis scan.**
  - **Technology CAF (Coherent Adaptive Focusing).**
  - **Automatic inspection mode** (calibration, standard cycles, inspection and re-scan defects).
  - **IHM : supervision, automatic analysis of the maps for defects detection, grouping of defects with A-Scans, automatic measurement of the part size, SQL database to store activities and results.**
  - **Tank dimension : 6000mm x 1000mm x 600mm**
  - **Maximum axis feedrate : 500 mm/s**
  - **Accuracy : Gantry positioning  $\pm 0.2\text{mm}$  et repeatability  $\pm 0.1\text{ mm}$**
  - **Filtration system : sand filter, UV treatment, heater with temperature regulation, fluid recirculation pump.**

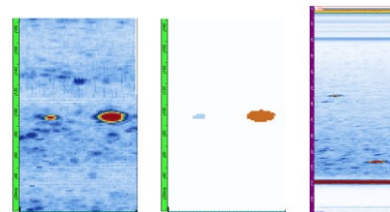
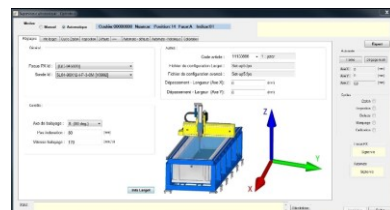
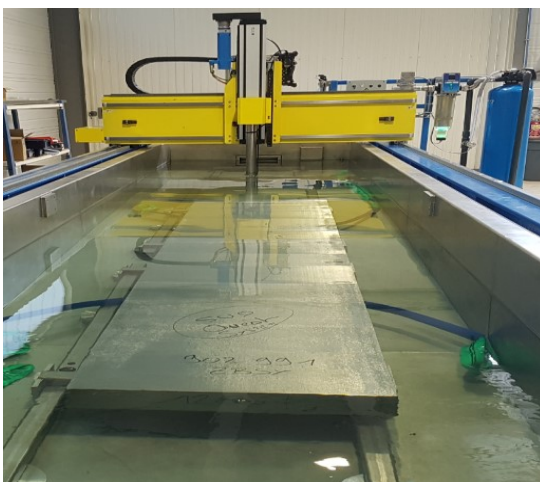
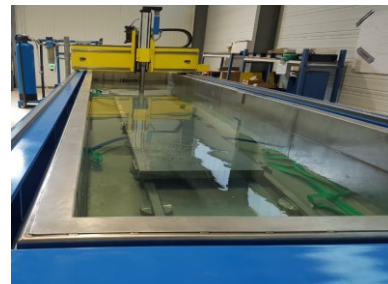


Figure - Cycle Etalon 2TEP