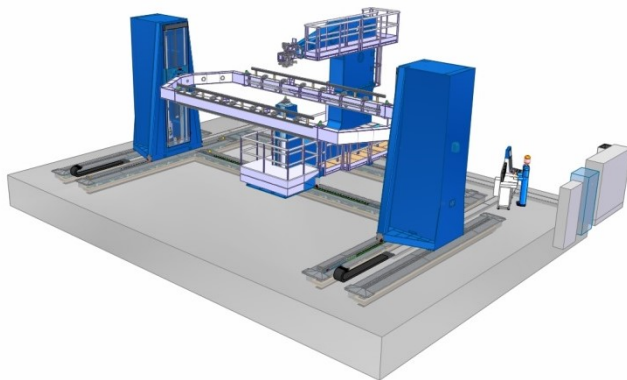




6-axis carrier for riveting unit :

Features :

- **Ranges and axis feedrate :**
 - X : 7800 mm, 6 m/min.
 - Y : 4500 mm, 6 m/min.
- **Vertical movement :**
 - Z/W : 2600 mm, 6 m/min.
- **Frame rotation :**
 - A1/A2 : +/- 90°, 180°/min.
- **NC :** Siemens 840DSL



Automatic grinding machine :



Features :

- **Ranges and axis feedrate :**
 - X : 5000 mm, 10 m/min.
 - Y : 2500 mm, 5 m/min.
 - Z : 2000 mm, 5 m/min.
 - B : \varnothing 1200 mm, 10 tr/min.
- **Spindle :**
 - Power : 25 kW.
 - Rotation speed : 3 200 tr/min.
- **NC :** Siemens 840DSL.
- **Options :** Grinding accessories magazine, automatic parts turning system.

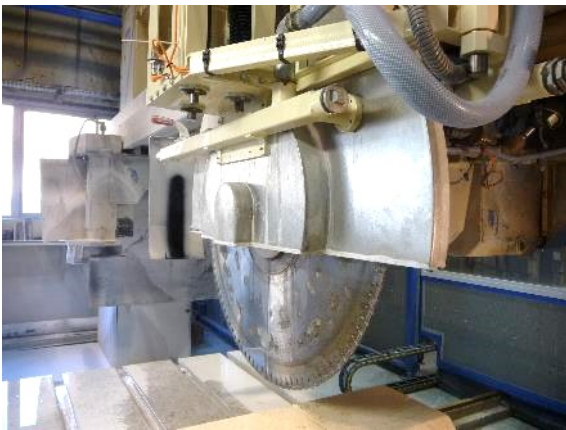


Refractory material sawing machine :



Features :

- **Gantry with gripping system :**
 - X : 7000 mm, 10 m/min.
 - Y : 4000 mm, 10 m/min.
 - Z : 1200 mm, 10 m/min.
- **Spindle (sawing) :**
 - Power : 14 kW.
 - Rotation speed : 500 tr/min.
 - Blade diameter : 725 mm.
- **HMI : Development of PLC program.**
- **Palletizing system (parts transfer).**



Mobile drilling machine :



Features :

- **Ranges and axis feedrate :**
 - X : 200 mm, 10 m/min.
 - Y : 200 mm, 10 m/min.
 - Z : 300 mm, 10 m/min.
- **Electrospindle :**
 - Power : 5,5 kW.
 - Torque : 360 Nm.
 - Rotation speed (max) : 1 500 tr/min.
 - Taper : SA40.
- **NC : Siemens 840DSL.**
- **Micro spray.**